

MARK	DATE	DESCRIPTION	BY

REVISIONS

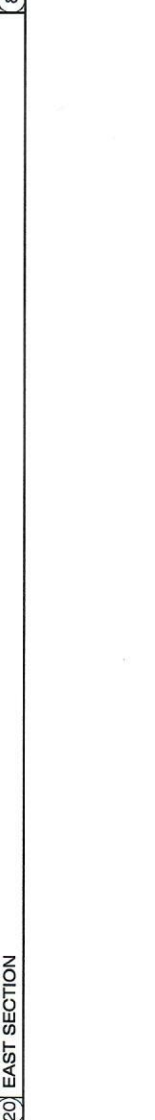
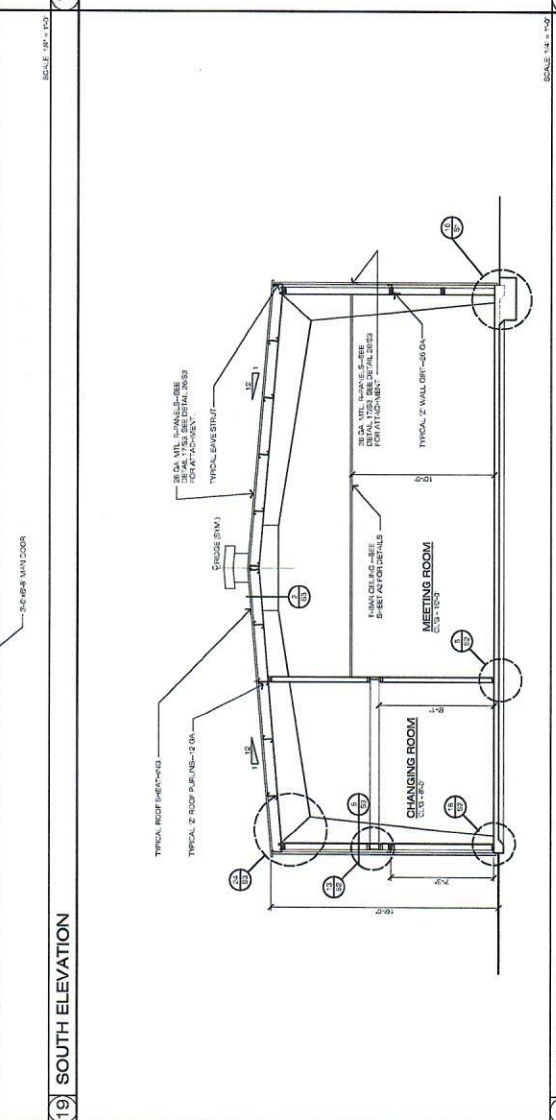
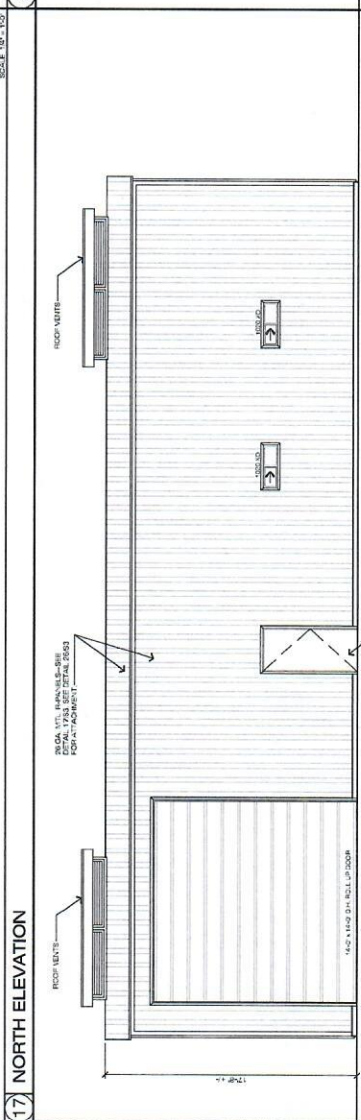
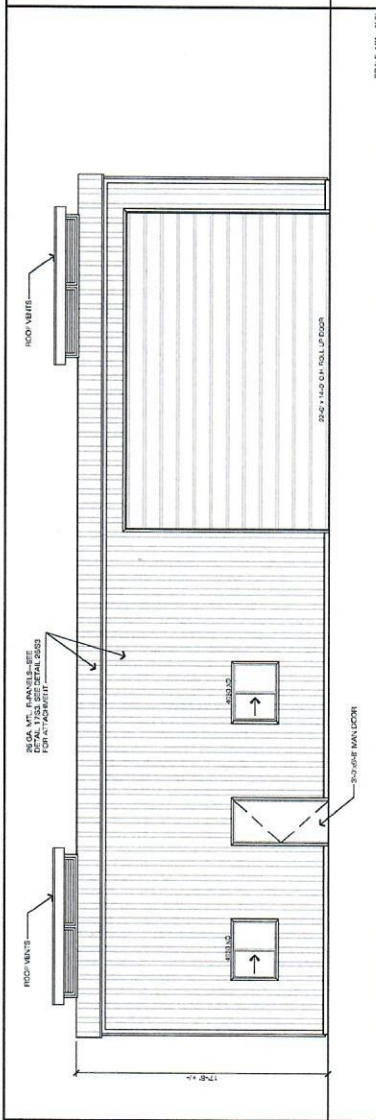
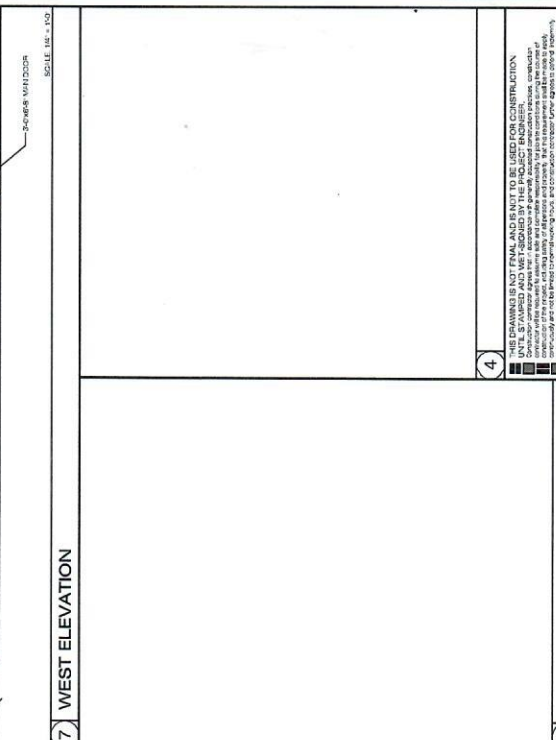
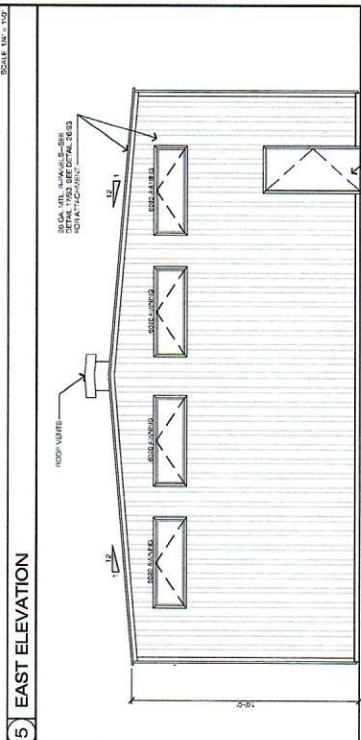
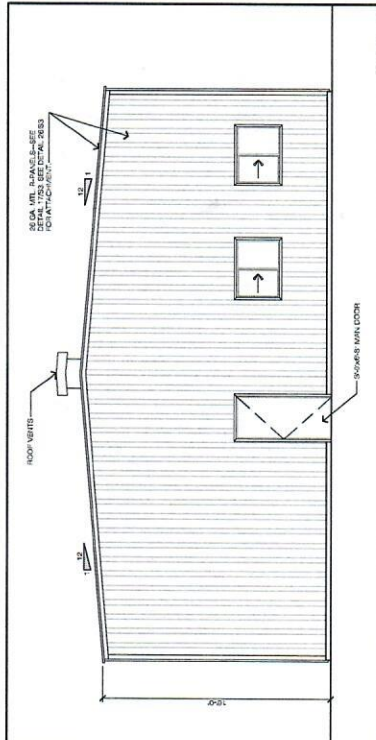
CLIENT: A NEW FIRE STATION FOR:  
 MOKELVINE HILL FIRE DISTRICT  
 8150 CHURCH STREET  
 MOKELVINE HILL, CA 95245  
 PHONE: (209) 296-1399

ARCHITECT: WBS  
 WILSON BROS. & SONS  
 ARCHITECTS  
 1415 17TH ST.  
 OAKLAND, CA 94612  
 PHONE: (415) 763-1100  
 FAX: (415) 763-1101  
 WWW.WILSONBROS.COM

DRAWINGS:  
 EXTERIOR  
 ELEVATIONS  
 SECTION AND  
 NOTES

SHEET: AS NOTED  
 SCALE: AS NOTED  
 DATE:  

A3  
 4 OF 13 SHEETS



THIS DRAWING IS NOT FINAL AND NOT TO BE USED FOR CONSTRUCTION.  
 ANY CHANGES TO THIS DRAWING MUST BE APPROVED BY THE ARCHITECT.  
 THE ARCHITECT'S LIABILITY IS LIMITED TO THE DESIGN AND CONSTRUCTION OF THE BUILDING.  
 THE ARCHITECT IS NOT RESPONSIBLE FOR THE ACCURACY OF THE INFORMATION PROVIDED BY THE CLIENT.  
 THE ARCHITECT IS NOT RESPONSIBLE FOR THE ACCURACY OF THE INFORMATION PROVIDED BY THE CLIENT.

MARK	DATE	DESCRIPTION	BY

REVISIONS

CLIENT: A NEW FIRE STATION FOR:  
MOKELUMNE HILL FIRE DISTRICT  
MOKELUMNE HILL FIRE DISTRICT  
1860 CHURCH STREET  
MOKELUMNE HILL, CA 95245  
PHONE (209) 286-1389

ARCHITECT: MARY ANN BRYAN  
1919 MAIN STREET  
PALM AVE. CA 95222  
CALIFORNIA  
A.P. N. 016-005-088-000

DRAWINGS:  
FLOOR PLAN,  
ELEVATIONS,  
SECTION AND  
NOTES

FILE NO.: 04668  
DATE: 08/11/09  
SCALE: AS NOTED  
SHEET: A1  
2 OF 13 SHEETS

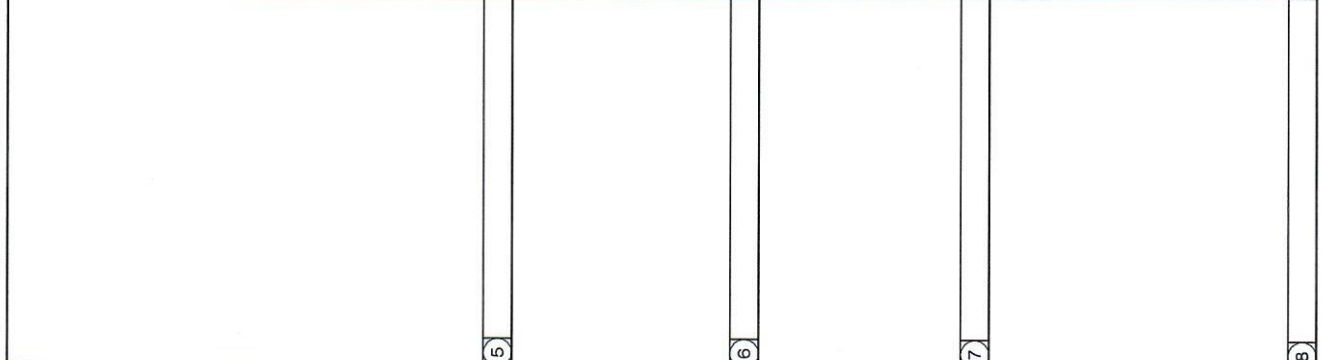
1. SEE DIMENSION SHEETS FOR ALL EXTERIOR SURFACES.
2. ALL DIMENSIONS ARE TO FACE OF CONCRETE, FRAMING OR ROOF J.O.B.
3. CONTRACTOR TO VERIFY ALL EXTERIOR WINDOW AND DOOR THRESHOLDS FOR PROPER SLOPE AND FINISH.
4. ALL ANGLED WALLS ARE AT 45° ANGLE.
5. ALL WALLS SHALL BE 8" THICK UNLESS OTHERWISE NOTED.
6. REFER TO ATTACHED TITLE SHEET FOR ALL DIMENSIONS AND FINISHES.
7. ALL DOOR OPERATING WEIGHTS ARE TO BE 55 LB UNLESS OTHERWISE NOTED.
8. ALL DOOR OPERATING WEIGHTS ARE TO BE 55 LB UNLESS OTHERWISE NOTED.
9. ALL DOOR OPERATING WEIGHTS ARE TO BE 55 LB UNLESS OTHERWISE NOTED.
10. ALL DOOR OPERATING WEIGHTS ARE TO BE 55 LB UNLESS OTHERWISE NOTED.
11. ALL DOOR OPERATING WEIGHTS ARE TO BE 55 LB UNLESS OTHERWISE NOTED.
12. ALL DOOR OPERATING WEIGHTS ARE TO BE 55 LB UNLESS OTHERWISE NOTED.
13. ALL DOOR OPERATING WEIGHTS ARE TO BE 55 LB UNLESS OTHERWISE NOTED.
14. ALL DOOR OPERATING WEIGHTS ARE TO BE 55 LB UNLESS OTHERWISE NOTED.
15. ALL DOOR OPERATING WEIGHTS ARE TO BE 55 LB UNLESS OTHERWISE NOTED.
16. ALL DOOR OPERATING WEIGHTS ARE TO BE 55 LB UNLESS OTHERWISE NOTED.
17. ALL DOOR OPERATING WEIGHTS ARE TO BE 55 LB UNLESS OTHERWISE NOTED.
18. ALL DOOR OPERATING WEIGHTS ARE TO BE 55 LB UNLESS OTHERWISE NOTED.
19. ALL DOOR OPERATING WEIGHTS ARE TO BE 55 LB UNLESS OTHERWISE NOTED.
20. ALL DOOR OPERATING WEIGHTS ARE TO BE 55 LB UNLESS OTHERWISE NOTED.

1 PLAN NOTES

1. ALL DOOR OPERATING WEIGHTS ARE TO BE 55 LB UNLESS OTHERWISE NOTED.
2. ALL DOOR OPERATING WEIGHTS ARE TO BE 55 LB UNLESS OTHERWISE NOTED.
3. ALL DOOR OPERATING WEIGHTS ARE TO BE 55 LB UNLESS OTHERWISE NOTED.
4. ALL DOOR OPERATING WEIGHTS ARE TO BE 55 LB UNLESS OTHERWISE NOTED.
5. ALL DOOR OPERATING WEIGHTS ARE TO BE 55 LB UNLESS OTHERWISE NOTED.
6. ALL DOOR OPERATING WEIGHTS ARE TO BE 55 LB UNLESS OTHERWISE NOTED.
7. ALL DOOR OPERATING WEIGHTS ARE TO BE 55 LB UNLESS OTHERWISE NOTED.
8. ALL DOOR OPERATING WEIGHTS ARE TO BE 55 LB UNLESS OTHERWISE NOTED.
9. ALL DOOR OPERATING WEIGHTS ARE TO BE 55 LB UNLESS OTHERWISE NOTED.
10. ALL DOOR OPERATING WEIGHTS ARE TO BE 55 LB UNLESS OTHERWISE NOTED.
11. ALL DOOR OPERATING WEIGHTS ARE TO BE 55 LB UNLESS OTHERWISE NOTED.
12. ALL DOOR OPERATING WEIGHTS ARE TO BE 55 LB UNLESS OTHERWISE NOTED.
13. ALL DOOR OPERATING WEIGHTS ARE TO BE 55 LB UNLESS OTHERWISE NOTED.
14. ALL DOOR OPERATING WEIGHTS ARE TO BE 55 LB UNLESS OTHERWISE NOTED.
15. ALL DOOR OPERATING WEIGHTS ARE TO BE 55 LB UNLESS OTHERWISE NOTED.
16. ALL DOOR OPERATING WEIGHTS ARE TO BE 55 LB UNLESS OTHERWISE NOTED.
17. ALL DOOR OPERATING WEIGHTS ARE TO BE 55 LB UNLESS OTHERWISE NOTED.
18. ALL DOOR OPERATING WEIGHTS ARE TO BE 55 LB UNLESS OTHERWISE NOTED.
19. ALL DOOR OPERATING WEIGHTS ARE TO BE 55 LB UNLESS OTHERWISE NOTED.
20. ALL DOOR OPERATING WEIGHTS ARE TO BE 55 LB UNLESS OTHERWISE NOTED.

3 DOOR REQUIREMENT NOTES

1. ALL DOOR OPERATING WEIGHTS ARE TO BE 55 LB UNLESS OTHERWISE NOTED.
2. ALL DOOR OPERATING WEIGHTS ARE TO BE 55 LB UNLESS OTHERWISE NOTED.
3. ALL DOOR OPERATING WEIGHTS ARE TO BE 55 LB UNLESS OTHERWISE NOTED.
4. ALL DOOR OPERATING WEIGHTS ARE TO BE 55 LB UNLESS OTHERWISE NOTED.
5. ALL DOOR OPERATING WEIGHTS ARE TO BE 55 LB UNLESS OTHERWISE NOTED.
6. ALL DOOR OPERATING WEIGHTS ARE TO BE 55 LB UNLESS OTHERWISE NOTED.
7. ALL DOOR OPERATING WEIGHTS ARE TO BE 55 LB UNLESS OTHERWISE NOTED.
8. ALL DOOR OPERATING WEIGHTS ARE TO BE 55 LB UNLESS OTHERWISE NOTED.
9. ALL DOOR OPERATING WEIGHTS ARE TO BE 55 LB UNLESS OTHERWISE NOTED.
10. ALL DOOR OPERATING WEIGHTS ARE TO BE 55 LB UNLESS OTHERWISE NOTED.
11. ALL DOOR OPERATING WEIGHTS ARE TO BE 55 LB UNLESS OTHERWISE NOTED.
12. ALL DOOR OPERATING WEIGHTS ARE TO BE 55 LB UNLESS OTHERWISE NOTED.
13. ALL DOOR OPERATING WEIGHTS ARE TO BE 55 LB UNLESS OTHERWISE NOTED.
14. ALL DOOR OPERATING WEIGHTS ARE TO BE 55 LB UNLESS OTHERWISE NOTED.
15. ALL DOOR OPERATING WEIGHTS ARE TO BE 55 LB UNLESS OTHERWISE NOTED.
16. ALL DOOR OPERATING WEIGHTS ARE TO BE 55 LB UNLESS OTHERWISE NOTED.
17. ALL DOOR OPERATING WEIGHTS ARE TO BE 55 LB UNLESS OTHERWISE NOTED.
18. ALL DOOR OPERATING WEIGHTS ARE TO BE 55 LB UNLESS OTHERWISE NOTED.
19. ALL DOOR OPERATING WEIGHTS ARE TO BE 55 LB UNLESS OTHERWISE NOTED.
20. ALL DOOR OPERATING WEIGHTS ARE TO BE 55 LB UNLESS OTHERWISE NOTED.



20 FLOOR PLAN

